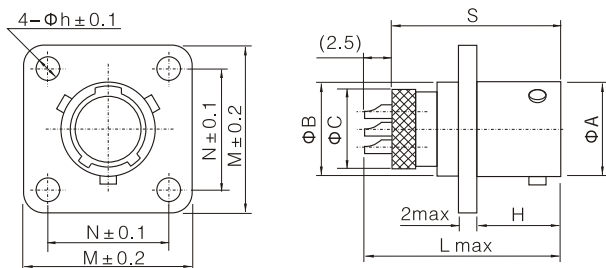


外形尺寸

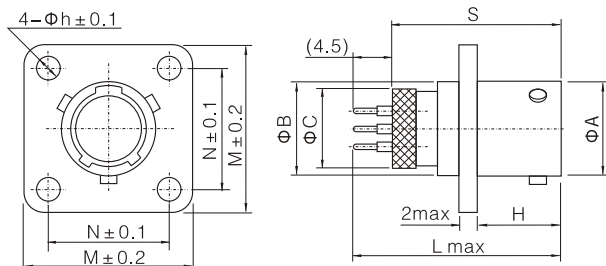
法兰安装焊线式卡口插座



壳体号	ΦA	ΦB	ΦC	Φh	H	L	N	M	S
04	10.1	10.1	8.6	2.7	9	19.2	13	18	17.1
06	11.7	11.7	11.7	2.7	11.5	22.1	15	20	19.6
08	12.4	12.4	12	3.2	11.5	22.1	15.1	21	19.6

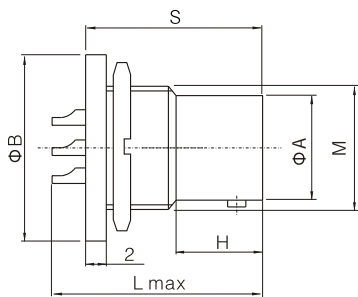
注：用户需要带导线的压接式卡口插座时,请在订货中注明导线长度

法兰安装焊板式卡口插座



壳体号	ΦA	ΦB	ΦC	Φh	H	L	N	M	S
04	10.1	10.1	8.6	2.7	9	21.6	13	18	12.1
06	11.7	11.7	11.7	2.7	11.5	24	15	20	19.6
08	12	12	12	3.2	11.5	24	15.1	21	19.6

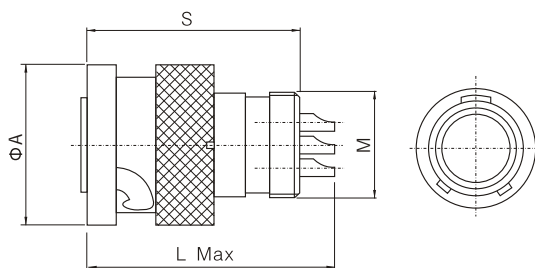
螺母安装焊线插座



壳体号	ΦA	ΦB	S	H	L	M
04	10.1	17	17.1	8	19.2	M12X1-7H
06	11.7	19	19.6	10	22.1	M14X1-7H
08	12.4	19.5	19.6	10	22.1	M14X1-7H

注：用户需要带导线的压接式卡口插座时,请在订货中注明导线长度

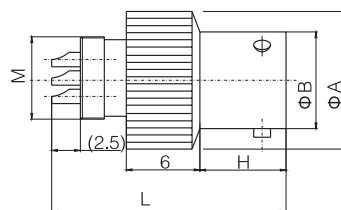
焊线式卡口插头



壳体号	ΦA	S	L	M
04	13.5	17.5	20	M8.5X0.5-7H
06	18	20.2	24	M12X1-7H
08	20	20.2	24	M14X1-7H

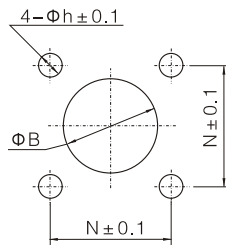
注：用户需要带导线的压接式卡口插座时,请在订货中注明导线长度

自由端插座



壳体号	ΦA	ΦB	H	L	M
04	13.5	10.1	7.5	19.2	M8.5X0.5-7H
06	18	11.7	10	22.1	M12X1-7H
08	20	12.04	10	22.1	M14X1-7H

推荐法兰安装开孔尺寸

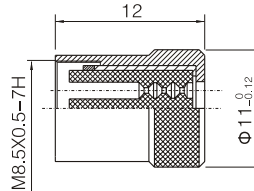


壳体号	ΦB	Φh	N
04	10.4	2.75	13
06	12	2.75	15
08	12.7	3.25	15.1

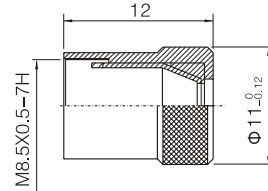
尾部附件

4号壳体插头选配尾部附件

-01型尾部附件



-02型尾部附件



6号、8号壳体插头选配尾部附件

-03型尾部附件

